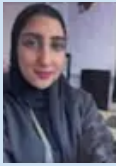


SEND NEWSLETTER 2026-27



Mrs Din - SENCO Mr Melmoth - Inclusion Manager/AHT



Miss Sheikh (above) - SEN HLTA/ELSA lead



Miss Hashim - SEN HLTA/Speech and language support



Welcome to Yeading Junior's SEND newsletter for Spring 2026! 🌸

You can access our school SEND information report via this link;

<https://www.yeadingjuniorschool.co.uk/school-send-information-report-202425>

Our annual coffee morning on Monday 8th December 2025 was a huge success, and we hugely appreciated the support of our specialists, who were available to meet with parents/carers. **Watch this space for another coffee morning in the summer term!** 🙄



Nataliah Douglas (Specialist Language Advisor) from Hillingdon SEND advisory service, as well as Charlene Ramos and Tanya Rahman our link Educational Psychologists joined us on the day.



Nataliah Douglas



We also had a school visit from Ms. Danielle Roberts who is the local authority SEND team manager for all primary schools. Danielle had the opportunity to walk around Yeading and see how we support children with special needs.



We have been designing our new cognition and learning padlet, please click on the link to take you to the one stop shop for local offers; [cognition and learning padlet](#)

HILLINGDON SENDIASS

The Service provides legally based, impartial, confidential and accessible information and advice for parents of children and young people with SEN and/or disabilities, about education, health and social care.

The service will work with parents and young people together but also provides a service directly and separately to young people aged 16-25.

OUTSIDE AGENCY KEY INFORMATION

<https://careandsupport.hillingdon.gov.uk/Services/130/SENDIASS>

Email on - sendiass@hillingdon.gov.uk

Locations: 4 West 10, Hillingdon Civic Centre, High Street, Uxbridge, UB8 1UW

Contact information Please contact the school office on 01895462396 and request to speak to Mrs Din (SENCO) or Mr Melmoth (Inclusion Manager) to discuss any SEND related concerns.

Autism Support

Arts for Life Project

Activities for Children with Additional Needs

The Doodle Den, St Matthews Church Community Hall Annexe, Hallowell Road, Northwood, HA6 1DW

Telephone: 020 8064 0822

Email: enquiries@artsforlifeproject.org

Website: [Doodle Den – Arts for Life Project](#)

Triple P Positive Parenting Program

Parent and Carer Support

Telephone: 0207 987 2944

Email: nhsnwl.triplep-hillingdon@nhs.net

Website: <https://www.triplep-parenting.uk.net/uk/triple-p/>

Hillingdon Autistic Care and Support (HACS)

Parent and Carer Support

Dudley Place, Off Pinkwell Lane, Hayes, Middlesex, UB3 1PB

Telephone: 020 8606 6780

Email: enquiries@hacs.org.uk

Website: <http://www.hacs.org.uk/>

Centre for ADHD & Autism Support (CAAS)

CAAS aims to support, educate and empower individuals diagnosed with ADHD or who are autistic, their families and the community. Through raising awareness we change perceptions and break down barriers. CAAS provides support and understanding in a safe and non-judgemental environment. As well as having relevant qualifications, the personal experience of staff along with empathy and understanding, allows our clients to feel a sense of belonging when they access the centre. We provide a comprehensive service that acknowledges that clients need support pre- and post- diagnosis. We believe in early support rather than crisis management and our holistic approach encompasses the whole family.

www.adhdandautism.org

02084291552